

2021 4

2021 12 31

2022 1 21

§ 1

2022 1 21

2021 10 1 2021 12 31

§ 2

	-
	920002

	A	C
	920002	920922
	185,893,696.16	7,637,070.26

" "

<

>

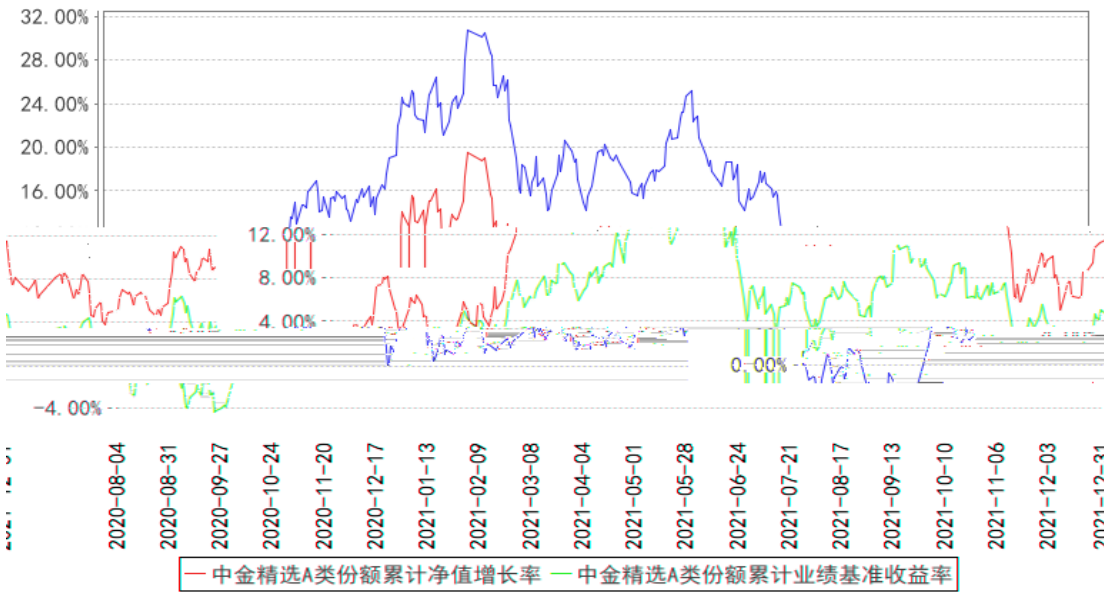
§ 3

3.1

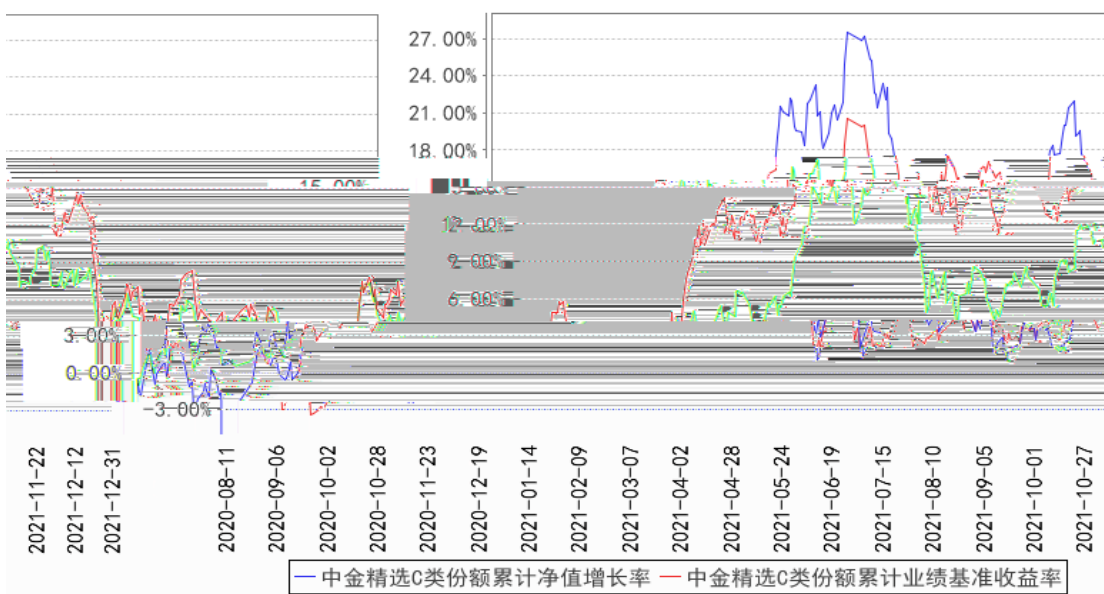
2021	10	1	-2021	12	31
------	----	---	-------	----	----

	2.44%	0.86%	1.46%	0.71%	0.98%	0.15%
6	-6.97%	1.04%	-4.68%	0.92%	-2.29%	

中金精选A类份额累计净值增长率与同期业绩比较基准收益率的历史走势对比图



中金精选C类份额累计净值增长率与同期业绩比较基准收益率的历史走势对比图



§ 4

4.1

		2020	8	4	-
					11
					2007
					2010
					2010.7-2015.4
					2015.5-

1. " " " "

2. " " " "

3.

4.1.1

		-	-	-
		-	-	-
		-	-	-
		-	-	-

2021 10 11 1

4.2

4.3

4.3.1

4.3.2

5%

4.4

4.5

2021	12	31	A	2.0627	5.9735
C			2.0483	2.0483	A
		2.44%	C	2.32%	

1.46%

4.6

§ 5

5.1



8		39,171.25	0.01
9		410,245,175.70	100.00

5.2

5.2.1

			%
A		8,017.95	0.00
B		-	-
C		322,026,873.28	80.69
D		-	-
E		-	-
F		3,968,698.20	0.99
G		-	-
H		2,304.00	0.00
I		5,424,374.00	1.36
J		13,207,739.35	3.31
K		9,453,065.44	2.37
L		-	-
M		38,442.69	0.01
N		14,366.77	0.00
O		-	-
P		-	-
Q		4,671.94	0.00
R		10,144,297.92	2.54
S		-	-
		364,292,851.54	91.28

5.2.2

5.3

5.3.1

--	--	--	--	--

6	002078		2,076,656	23,860,777.44	5.98
7	603833		159,545	23,532,887.50	5.90
8	002254		1,049,120	20,573,243.20	5.16
9	600066		1,592,589	17,550,330.78	4.40
10	000596		55,500	13,542,000.00	3.39

5.4

5.5

5.6

5.7

5.8

5.9

5.9.1

5.9.2

5.10

5.10.1

5.10.2

5.10.3

5.11

5.11.1

5.11.2

5.11.3

1		21,360.78
2		-
3		-
4		4,653.33
5		13,157.14
6		-
7		-
8		-
9		39,171.25

5.11.4

5.11.5

5.11.6

§ 6

	A	C
	195,462,096.47	6,978,175.71
	805,283.16	1,110,588.29
:	10,373,683.47	451,693.74
" -"	-	-
	185,893,696.16	7,637,070.26

§ 7

7.1

7.2

§ 8

8.1

20%

8.2

1.

2.

A

A

3.

4.

§ 9

9.1

9.2

1 3 B 42

9.3

www.ci.cc.com

2022 1 21